

Municipal Sector: 2014 Emissions Profile

The Municipal Sector represents emissions associated with activities of the City's municipal operations, which is comprised of three areas: Facilities; Traffic Signals and Streetlights; and Fleet.

Target: 12.5%

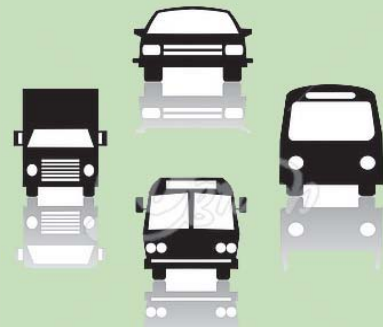
2014 Municipal Operations: 1% 2005-2014: ↓25%



Facilities



Traffic Signals & Streetlights



Fleet

2005 vs. 2014

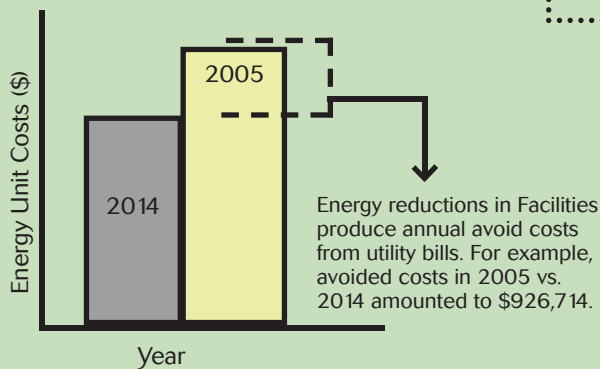
↓ 64% GHG Emissions
↓ 25.5% Energy Use

↓ 21% GHG Emissions
↓ 23.6% Electricity (kWh)

↓ 15% GHG Emissions
↓ 24.9% Diesel

Facilities' Annual Energy Use Costs
(Calculated at 2011 Utility Rates)

- Reductions in facility operations reflect three major efforts:
- Improve the efficiency of existing facilities
 - Pursue high performance green buildings for new facilities
 - Implement operational adjustments



There are 650 vehicles in the city's fleet: 10 hybrids, 8 propane/gasoline flex vehicles, and 3 electric vehicles. All diesel vehicles use a 5% biodiesel mix that burns cleaner than typical gasoline. There is an ongoing focus on innovation and efficiency to continue to reduce the fleet's emissions.

Goals Community-wide: Prevent increases in emissions and pursue a 10% emissions decrease by 2020
Municipal Operations: 12.5% average emissions reductions per year through 2020

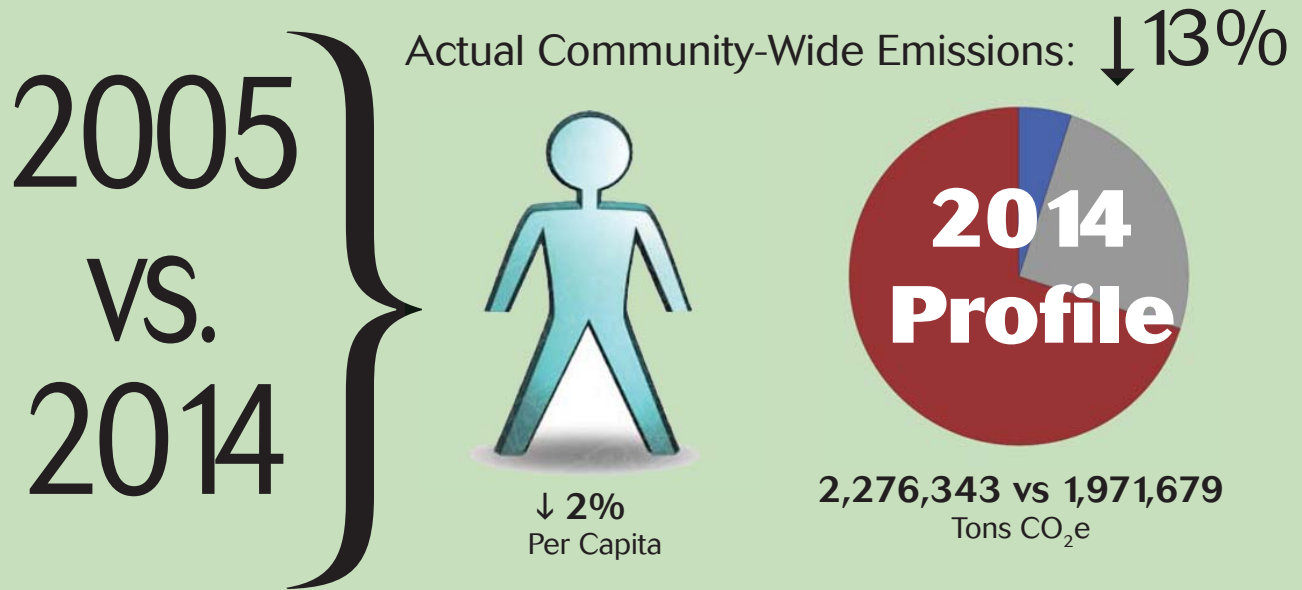
City of Roanoke 2014 Emissions Summary

This summary reflects the result of the City of Roanoke's initial ICLEI/Local Government for Sustainability target reduction, set by city council in 2008. The baseline inventory was performed for the year 2005. Since the first reporting period in 2008 council receives an annual update of the community emissions report. The municipal inventory is more complex, therefore it has occurred in 2008, 2012, and 2014.

Baseline year 2005, period ending by the end of 2014.

Community Target Reduction - 10%
Actual Community Reduction – 13.4%

Municipal Target Reduction – 12.5%
Actual municipal reduction – 25%



2014 Profile: Commercial & Industrial 20.2% Residential 23.9% Transportation 23.3% Waste 2.2%

The Largest Community Sectors

Industrial	Commercial	Residential	Transportation
2014 Profile: 20%	2014 Profile: 31%	2014 Profile: 24%	2014 Profile: 23%
2005-2014 ↓ 20% GHG Emissions	2005-2014 ↓ 15% GHG Emissions	2005-2014 ↓ 12% GHG Emissions	2005-2014 ↓ 6% GHG Emissions

Municipal Sector Focus

The city's municipal operations contribute 1% of the city's community-wide emissions profile.

See Next Page for Municipal Focus

