

# Quality of Life

## Parks and Recreation

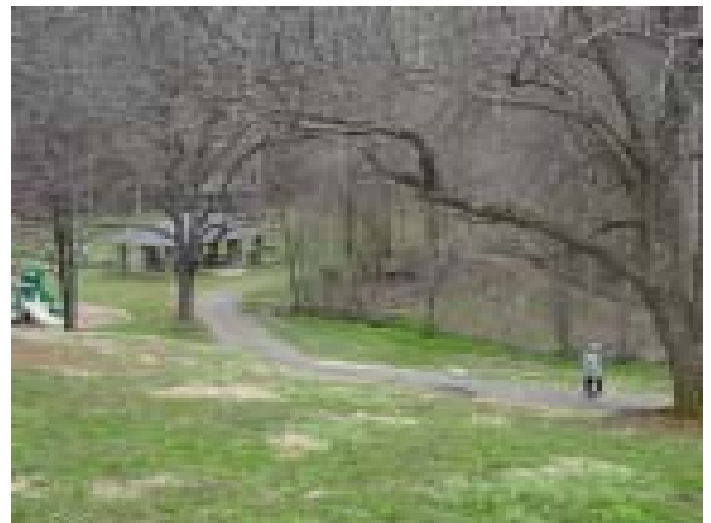
Grandin Court has an abundance of amenities that contribute to the neighborhood's quality of life. The neighborhood features three parks, a greenway, a recreational center, schools within walking distance, and attractive, walkable streets.

Grandin Court is noted for its abundant park space, natural resources, and recreational opportunities that benefit all Roanoke citizens. It features a large community park, two neighborhood parks, and a recreational center. Fishburn

Park is the largest community park in southwest Roanoke, and the fourth largest in the city. A community park contains between 10-100 acres and usually serves two or more neighborhoods. Blair J. Fishburn deeded it to the City in 1935. Its 43 acres contain open land, wooded hillsides, a flowing creek, a historic house, two tennis courts, a picnic shelter, two playgrounds, and numerous trails for hiking and biking.



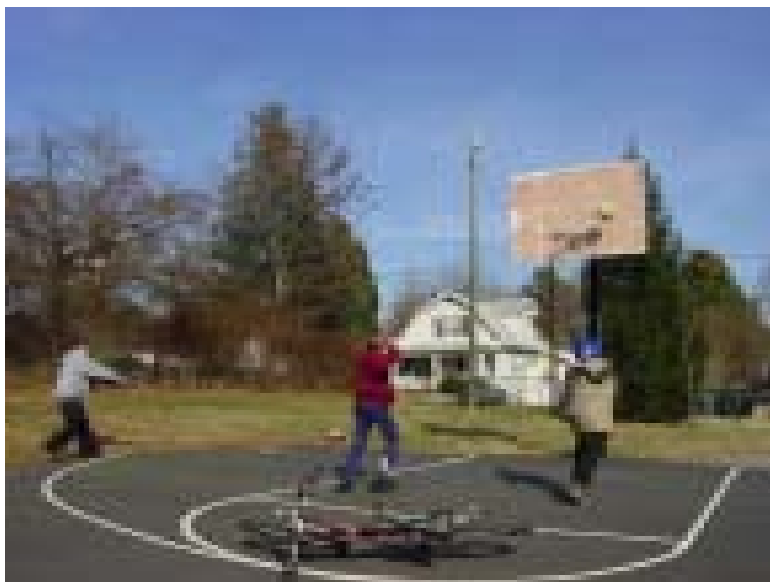
*Views of Fishburn Park*



Shrine Hill Park, a 6-acre neighborhood park is located within the Patrick Henry High School complex near the corner of Grandin Road and Guilford Avenue. A neighborhood park contains between two and nine acres, is the basic unit of the park system, and serves as the recreational and social focus of the neighborhood. This park features three lighted tennis courts, parking areas, and open space for soccer practice. Woodlawn Park is a unique six-acre wooded neighborhood park that features a creek and bird sanctuary. Murray Run Greenway runs through the park. Residents noted the need to maintain the quality of the wooded spaces that they enjoy.

Grandin Court Recreation Center, located in the residential core, was built in 1935 as the Weaver Heights Public School. The frame structure with large windows contains 1,900 square feet with a meeting room/dance floor, a crafts room, game room, and small kitchen. Dancing, arts and crafts, and games are the primary uses of the facility. The small site features a playground and a basketball court. Although regarded in good condition, the facility is outdated and undersized. With daily average participation of 60 people, the facility is heavily used. Residents voiced concern about the elderly population being able to use the center. The Comprehensive Parks & Recreation Master Plan recommends the building be renovated as a regional dance center. The building may also be used for the new location of the Grandin Court Civic League.

The small site features a playground and a basketball court. Although regarded in good condition, the facility is outdated and undersized. With daily average participation of 60 people, the facility is heavily used. Residents voiced concern about the elderly population being able to use the center. The Comprehensive Parks & Recreation Master Plan recommends the building be renovated as a regional dance center. The building may also be used for the new location of the Grandin Court Civic League.



*Children having fun at the Grandin Court Recreation Center on a day off from school!*

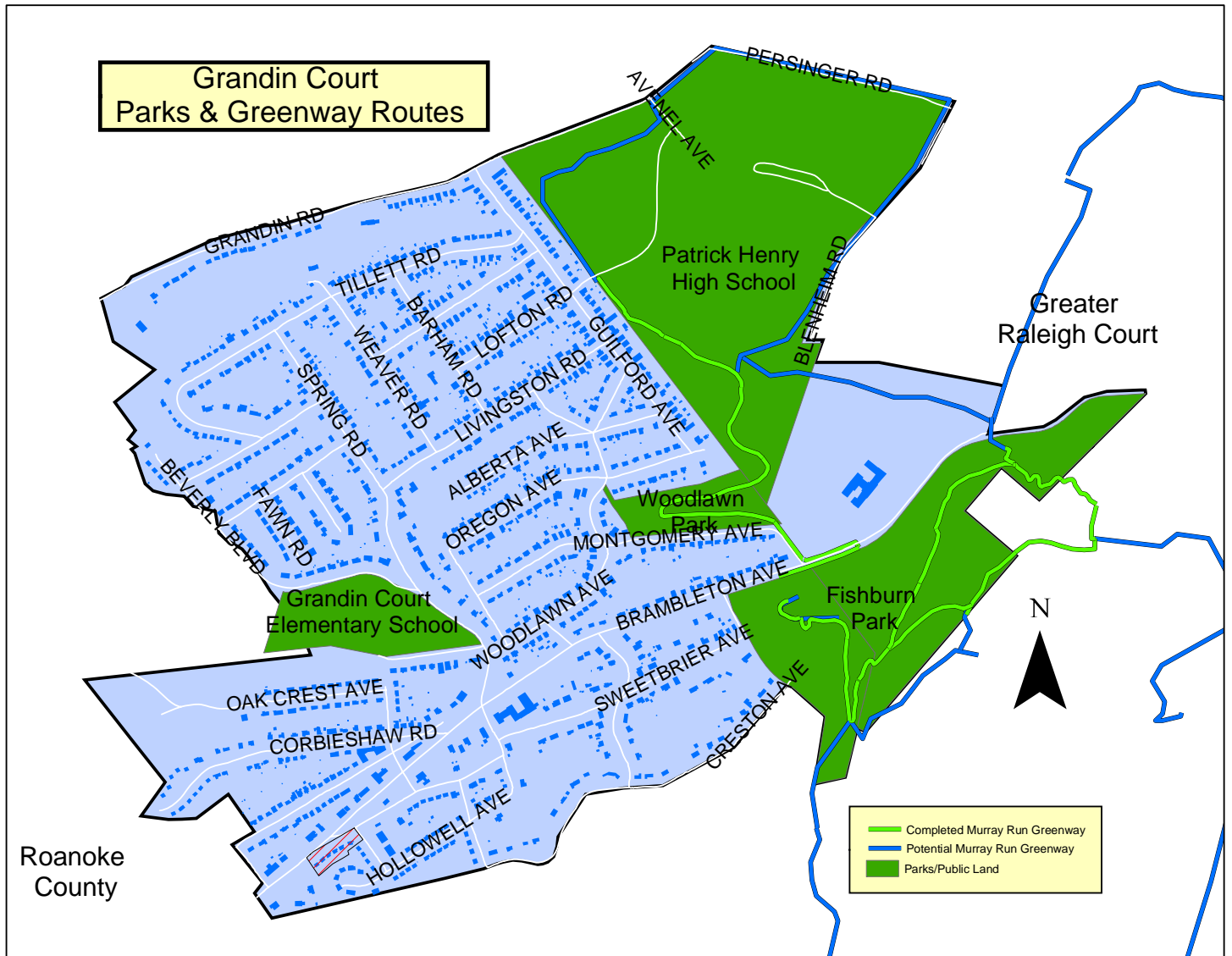


## Greenways

The Roanoke Valley Conceptual Greenway Plan proposes two greenways for the area:

**Murray Run** - extends west from the Roanoke River along the southern side of Brandon Avenue to the south across Colonial and Brambleton Avenues to southwest Roanoke County. The greenway is finished along part of the Patrick Henry High School complex, into Woodlawn Park, and all of Fishburn Park.

**Mudlick Creek** - This corridor would use city streets, sidewalks, and alleys to connect Mudlick Creek, and the adjacent Greater Deyerle and Raleigh Court neighborhoods, with the Patrick Henry High School complex.



## Community Involvement

Interested residents have responded to concerns raised at the initial neighborhood planning workshops and are reactivating the Grandin Court Civic League to maintain and improve the neighborhood. The league was established in 1992 with the purpose of "maintaining wholesome living conditions in the neighborhood." The League had 70 members and met on an as-needed basis. Since 1996, the league has been inactive.

### Quality of Life Issues:

- Identify the future role of the Grandin Court Recreational Center.
- Reactivate the Grandin Court Civic League.
- Maintain and improve the current green space and natural resources.



*Vic Garbor of Parks and Recreation, gives a presentation to residents in one of three city workshops for the Grandin Court Neighborhood Plan.*